



QUALITY ASSURANCE FOR MANUFACTURING SUB-CONTRACT INSPECTION

Eley Metrology offer a sub-contract measurement and inspection service offering fast turnaround and accurate analysis of manufactured components.

In the inspection laboratory, we are able to offer enhanced measurement facilities, from high-volume measurement to one-offs and prototypes. Eley's niche is the ability to accommodate larger components and our record so far is three and a half tonnes on our CMMs without distortion.

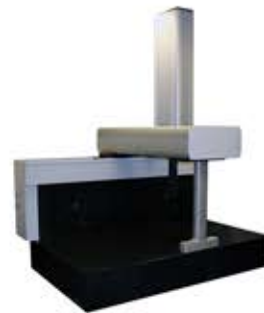
Contact and non-contact measurement methods are available and dependent upon the components can be carried out on our Truth coordinate measuring machines, Eley's patented Vertex VMS digital height gauge or on the Schut Optical DeMeet machine.

Within this inspection facility, experienced application engineers employ the latest CMM hardware and software enabling us to provide a quality inspection service. We have the flexibility to respond immediately to our customers' requirements, whether it is for a one-off component or to help overcome a surge in manufacturing demand whilst ensuring a quality service is maintained.

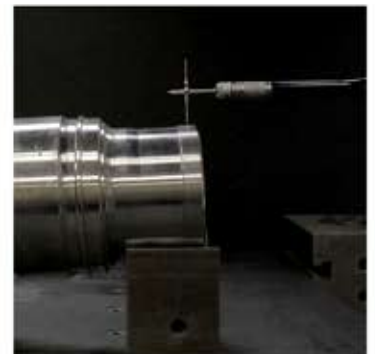
Eley have worked with a number of leading organisations providing solutions in the rail, aerospace, automobile, manufacturing industries and many more.

Eley Metrology are a UKAS accredited Laboratory (0333) to ISO/IEC 17025:2005.

Our CMMs carry performance verification certificates in accordance with ISO 10360.



**CMM, Video Optical, Contact or Non-Contact Inspection
Geometric, Free Form Inspection & Reverse Engineering
UKAS Accredited, Temperature Controlled Laboratory
Highly Skilled, Long Standing Application Engineers
Custom Reporting in a Number of Different Formats
Fully Traceable Certification**



ELEY METROLOGY LIMITED

Beaufort House, Beaufort Court, Mansfield Road, Derby, DE21 4FS
+44 (0)1332 367475 sales@eleymet.com www.eleymet.com